

Platinum IR Sensor Configuration  
Application V3.X.X



Certified (Exd)-Black text on Silver background



Low Power Certified (Exd)-Black text on White background



Non-Certified (Exd)-Blue text on Silver background



Low Power Non-Certified (Exd)-Blue text on White background



SIL1 Certified (Exd) – Red text on Silver background



Low Power SIL1 Certified (Exd) – Red text on White background



SIL1 Non-Certified (Exd) – Purple text on Silver background



Low Power SIL1 Non-Certified (Exd) – Purple text on White background

**Dynamment Limited**

Hermitage Lane Industrial Estate · Kings Mill Way · Mansfield · Nottinghamshire · NG18 5ER · UK.

Tel: 44 (0)1623 663636

email: [sales@dynamment.com](mailto:sales@dynamment.com) · [www.dynamment.com](http://www.dynamment.com)

## Index

<b>1. Safety Information - Read First</b>	<b>3</b>
<b>2. PC Application Password</b>	<b>3</b>
<b>3. Platinum Sensor Configuration</b>	<b>4</b>
<b>4. Private Configuration Data</b>	<b>7</b>
Single Gas Sensor	7
Dual Gas sensor	8
Data Fields	8
<b>5. Firmware Version</b>	<b>10</b>
<b>6. Configuration Data</b>	<b>11</b>
Single Gas Sensor	11
Data Fields	12
Range Data Fields	20
<b>7. Min / Max Temperature</b>	<b>21</b>
Temperature window	21
Data Fields	22
<b>8. Calibration</b>	<b>22</b>
Single gas sensor ( Detector 1, hydrocarbon or carbon dioxide)	22
Dual Gas Sensor ( Detector 1 usually hydrocarbon, Detector 2, usually CO2 )	23
<b>9. Analogue output</b>	<b>23</b>
Dac Zero	23
Dac FSD	23
Dac Restore	23
<b>10. Data Logging</b>	<b>24</b>

## Safety Information - Read First

Read and understand this manual before using the PC Application in the configuration and calibration of the Platinum sensor.

## PC Application Password

The PC Application is password protected. When the program is launched the user must enter a password before access to the sensor is allowed. NOTE: This password is only applicable to version 3.4.3



Click on the password menu option

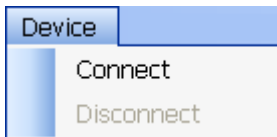


Enter the password and press the *Enter* button

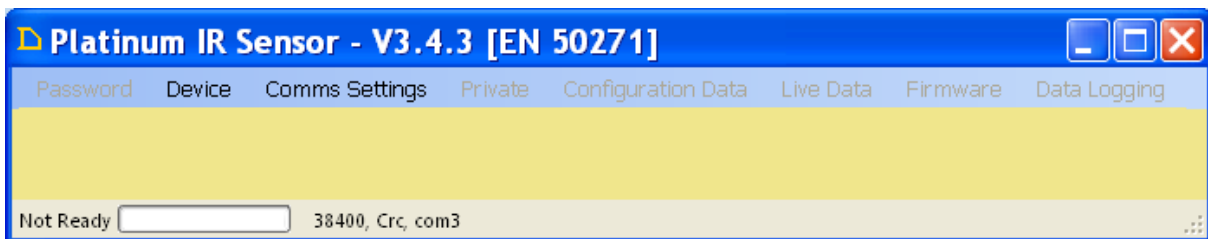
## Platinum Sensor Configuration

The Platinum sensor firmware V07.YY.ZZ can be used for both single gas and dual gas sensors. It is the configuration settings that determine the way the sensor behaves. Detector 1 in both sensors can have multiple ranges.

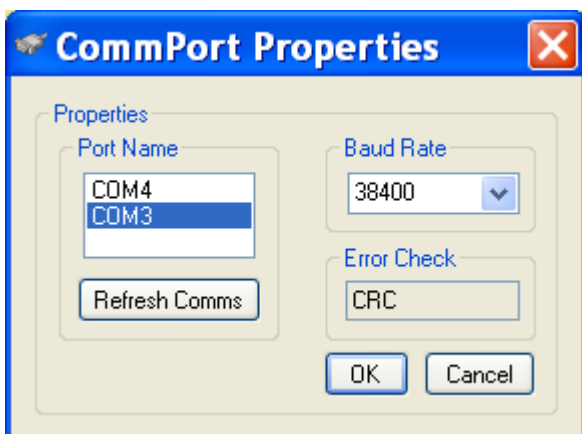
The first action to be performed is to connect the PC application to the sensor. This can be achieved selecting *Device / Connect*.



If the sensor does not respond then make sure that the correct Comms port / baud rate is selected. The *Comms Settings* can be set at any time by Selecting *Comms Settings*, i.e.

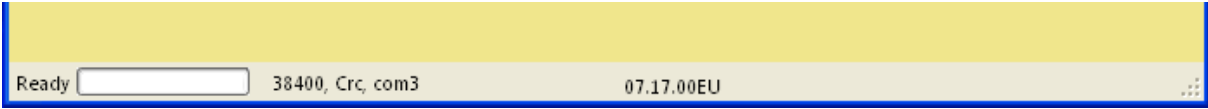


The following screen is shown:



Use the refresh Comms button to update the list of available comms, usually required after connecting a new comms device.

Once the sensor is detected the status bar at the bottom of the Application is updated with the sensor Firmware version. i.e.



The next action is to read the Private Data; this can be done as follows:  
Click in the *Private / Read Private Data* menu item, i.e.



The following screen will be displayed:

Platinum IR Sensor - V3.4.3 [EN 50271]

Password Device Comms Settings Private Configuration Data Live Data Firmware Data Logging

Private

Version

Batch number

Build type hardware

Build type

Serial number

Setup date

Bulb on time

Bulb off time

Dac Startup Value

Range 1 gas type

Range 2 gas type

Range 3 gas type

Range 4 gas type

Sensor type

Biogas mode

Update Sensor

Ready  38400, Crc, com3 07.17.00EU

This action results in additional menu items being made available to the user.

# Private Configuration Data

## Single Gas Sensor

The screenshot shows a software window titled "Platinum IR Sensor - V3.4.3 [EN 50271]" with a menu bar containing "Password", "Device", "Comms Settings", "Private", "Configuration Data", "Live Data", "Firmware", and "Data Logging". The "Private" tab is selected, displaying a configuration form with the following fields:

Version	5
Batch number	B1955N9
Build type hardware	HC02/HC - hardware 2
Build type	HC/4/V/P
Serial number	2
Setup date	18/01/2013
Bulb on time	25
Bulb off time	25
Dac Startup Value	2048
Range 1 gas type	CH4L
Range 2 gas type	CH4H
Range 3 gas type	HC
Range 4 gas type	None
Sensor type	Single
Biogas mode	Off

An "Update Sensor" button is located at the bottom right of the form. The status bar at the bottom of the window shows "Ready", a small input field, "38400, Crc, com3", and "07.17.00EU".

The only field that can be changed by the user is the *Dac Start-up Value*. All the remaining fields are setup during manufacture and cannot be changed by the user.

Note that the only item for the user to change is the Dac Startup Value, the rest are for information only.

## Dual Gas sensor

Platinum IR Sensor - V3.4.3 [EN 50271]

Password Device Comms Settings Private Configuration Data Live Data Firmware Data Logging

Private

Version 5

Batch number B1955N9

Build type hardware HC02/HC - hardware 2

Build type HC/4/V/P

Serial number 2

Setup date 18/01/2013

Bulb on time 25

Bulb off time 25

Dac Startup Value 2048

Range 1 gas type CH4L

Range 2 gas type CH4H

Range 3 gas type HC

Range 4 gas type CO2L

Sensor type Dual

Biogas mode Off

Update Sensor

Ready 38400, Crc, com3 07.17.00EU

## Data Fields

### Version

The version of the structure file.

### Batch number

A unique number that is used to uniquely identify the build records of the sensor.

### Build Type Hardware

A description of the sensor type.

### Serial number

A unique number that is derived from the *Build type hardware*, *Build type* and a number from 000000 to 999999.

### Setup date

The date / time when the sensor was first configured.



### **Bulb on time**

The time that the infrared source is on.

### **Bulb off time**

The time that the infrared source is off.

### **Dac Start-up value**

This setting is used to output a voltage level at the instant the sensor is powered, directly from the boot loader. This is necessary when the sensor emulates a pellistor type sensor. The range is 0 – 65000.

Note 1: The *DAC start-up value* has no effect on the dual sensor, it does not have an analogue output.

### **Range 1, 2, 3 and 4 gas types**

Sets the gas type associated with ranges 1 to 4.

The *Range 1* gas type to *Range 4* gas type simply serves to give a name to the gas that the sensor will be used for. They do not effect the operation of the sensor.

### **Single gas sensor**

The *Detector 1* is can be either a hydrocarbon element or a carbon dioxide element. The single gas sensor allows up to 3 ranges.

### **Dual gas sensor**

The *Detector 1* is usually the hydrocarbon element while *Detector 2* is usually the carbon dioxide element. The *Detector 1* has up to 3 ranges while the *Detector 2* has only one range.

Note however in the single gas sensor configuration only *Detector 1* is active and this can be any sensing element i.e. HC, CO<sub>2</sub>, NO<sub>2</sub>, N<sub>2</sub>O, CO etc

Possible settings are:

None	Range is de-selected and not used.
CH4L	Methane, usually 0-5%
CH4H	Methane, usually 0-100%
HC	Propane, usually 0-2%
HHC	Propane, usually 0-100%
CO2P	Carbon dioxide, usually 0-5000 ppm
CO2L	Carbon dioxide, usually 0-5%
CO2H	Carbon dioxide, usually 0-100%
Ethanol	Usually 0-LEL
Toluene	Usually 0-LEL
Propane	Usually 0-LEL
Butane	Usually 0-LEL
Hexane	Usually 0-LEL

### **Sensor type**

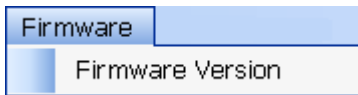
This can be either *Single* or *Dual* depending upon the hardware build. *Single* is where only one type of gas can be measured, while *Dual* is where the sensor is fitted with two gas detectors.

### **Biogas mode**

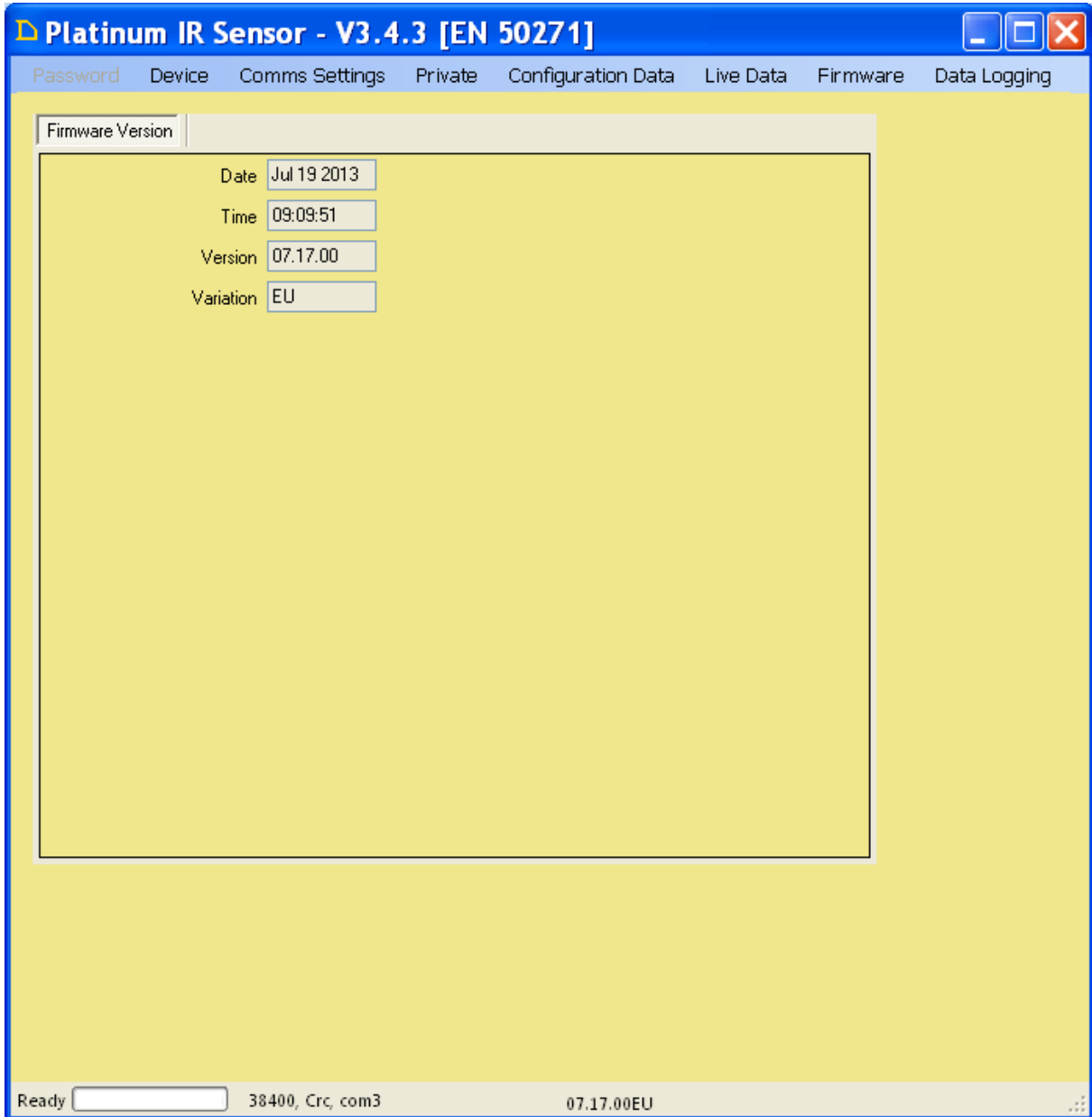
This setting is either On or Off and is set during manufacture depending upon the range of the CO<sub>2</sub> sensor. The reason for this setting is that the methane gas sensor readings are enhanced in the presence of high levels of CO<sub>2</sub>. By setting this option the methane gas readings can be compensated automatically by the firmware.

# Firmware Version

The firmware version of the sensor can be read by selecting the *Firmware* menu item as follows:



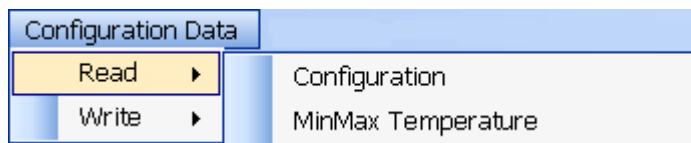
The following screen is displayed



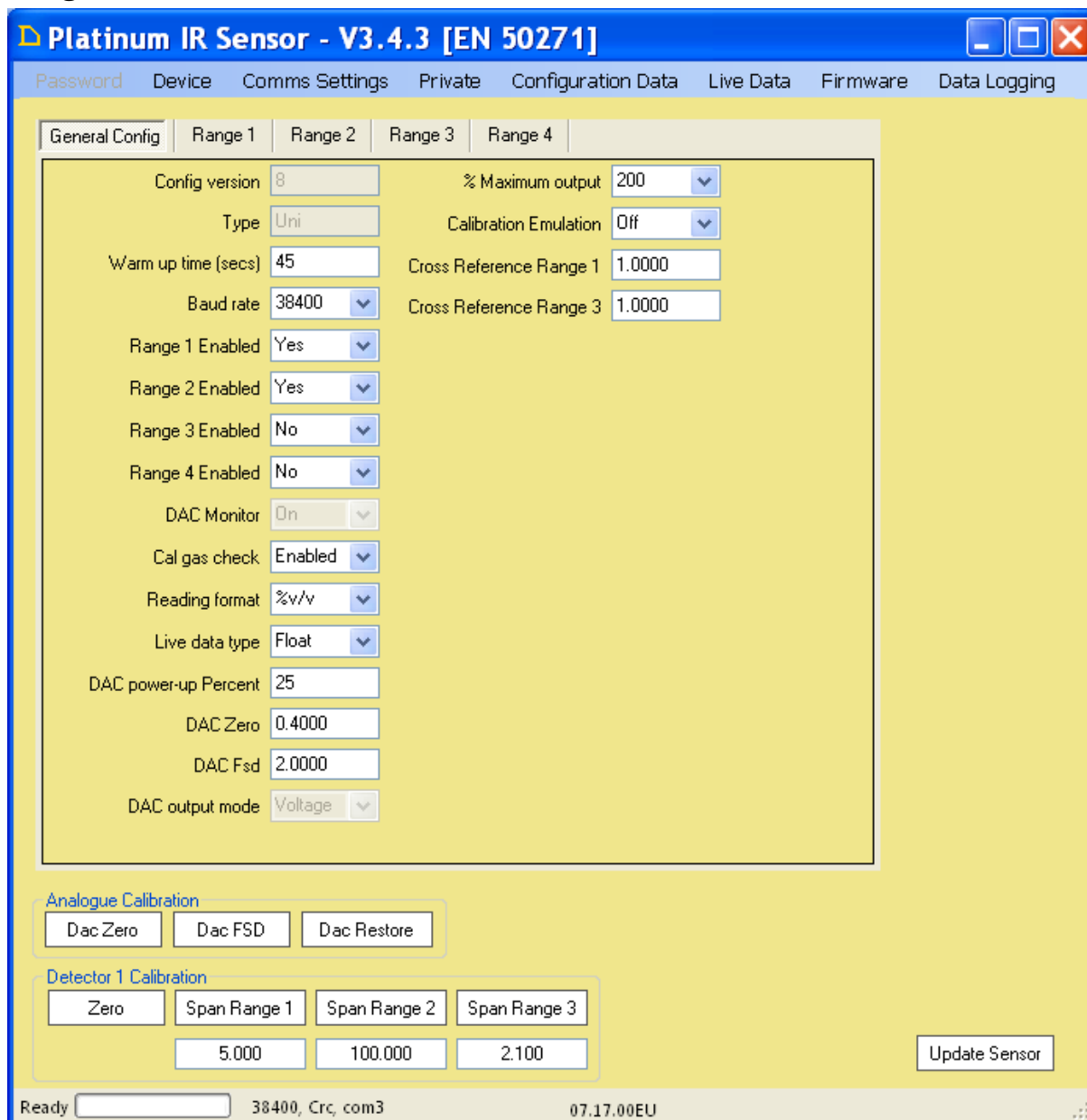
- Date:** The date that the firmware was created.
- Time:** The Time that the firmware was created.
- Version:** The version of the firmware, XX.YY.ZZ, where:
  - XX = Major, reserved for hardware changes.
  - YY = Minor, reserved for features.
  - ZZ = Revision, reserved for bug fixes.
- Variation:** Special conditions.
  - 'D' = Dual sensor, 'S' = Single sensor.
  - 'E' = EN50271 code.
  - 'U' = Universal code.

# Configuration Data

The configuration data can be accessed as follows:  
Select Configuration Data, Read, Configuration i.e.



## Single Gas Sensor



Note 1: The sensor is fitted with a DAC, as such the Analogue output buttons are available.  
Note 2: The DAC output mode is shown but cannot be changed by the user.

## Dual Gas Sensor

**Platinum IR Sensor - V3.4.3 [EN 50271]**

Password Device Comms Settings Private Configuration Data Live Data Firmware Data Logging

General Config Range 1 Range 2 Range 3 Range 4

Config version	8	% Maximum output	200
Type	Uni	Calibration Emulation	Off
Warm up time (secs)	45	Cross Reference Range 1	1.0000
Baud rate	38400	Cross Reference Range 3	1.0000
Range 1 Enabled	Yes		
Range 2 Enabled	Yes		
Range 3 Enabled	No		
Range 4 Enabled	No		
DAC Monitor	On		
Cal gas check	Enabled		
Reading format	%v/v		
Live data type	Float		
DAC power-up Percent	25		
DAC Zero	0.4000		
DAC Fsd	2.0000		
DAC output mode	Voltage		

Detector 1 Calibration

Zero Span Range 1 Span Range 2 Span Range 3

5.000 100.000 2.100

Update Sensor

Ready 38400, Crc, com3 07.17.00EU

Note The 'DAC' fields do not have any effect on the sensor operation but are shown because the Single / Dual sensor types share the same structure data to enable a universal code model.

## Data Fields

### Config Version

The version of the structure file.

### Type

This is a string of up to 8 characters that is used to describe the sensor.

### Warm up time

This setting sets the number of seconds that is required for the sensor to give valid readings after power has been applied. The limits are 45 to 120.

## Baud rate

The serial communications speed, 4800, 9600, 19200 & 38400 are available. The default setting is 38400. The serial communications can be over-ridden to place the sensor into one of two different modes:

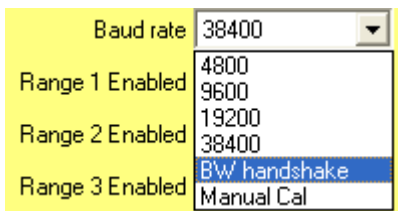
- 1) BW mode
- 2) Calibration mode.

## BW Mode

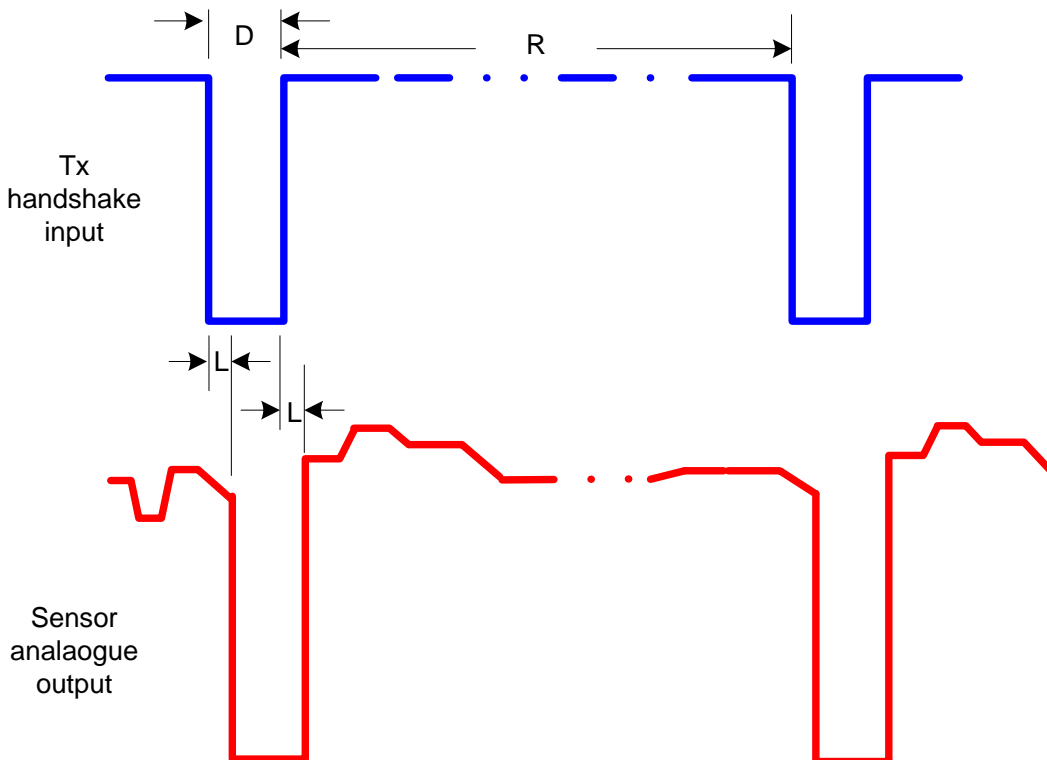
The Platinum sensor can be placed in a mode that replaces the normal serial communications with a hand shake system that directly affects the analogue output.

**If the user relies solely on the analogue output then there is no way to know if the sensor processor is working or if it has 'frozen'.**

To this end the 'BW' mode of operation changes the serial I/O lines to digital inputs. When the Tx pin goes low the analogue output of the sensor is driven to 0Volts. When the Tx pin goes high the analogue outputs reverts to normal operation.



The timing is shown in the following diagram:



- L = Latency, max 2 milliseconds
- D = Duration, min 4 milliseconds
- R = Repitition, min 500 milliseconds

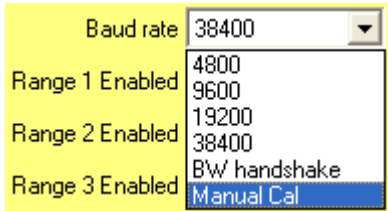
**Note: The dual sensor does not have an analogue output so this option should not be used.**

## Platinum sensor - Cal Mode

The Platinum sensor can be placed in a mode that replaces the normal serial communications with view to calibration

The sensor can be instructed to either Zero the sensor or Span the sensor using the Rx (zero) and Tx (Span) pins. The cal option uses the internal gas setting to span the sensor, thus it is important to apply the correct gas before a calibration is performed.

Selecting the Cal Mode is achieved via the PC Application as follows:



The Serial Tx and Rx pins will only be changed to calibration pins when the sensor has been powered for approximately 10 minutes. This makes sure that the user cannot be calibrated before the sensor has been powered for a sufficient time.

The normal comms mode can be resumed by removing power or by holding the Tx & Rx pins at 0V for > 15 seconds.

**Note** This is only suitable for single gas sensors.

### **Range 1, 2, 3 & 4 enable settings**

The standard configuration of the hydrocarbon sensor is as follows:

- Range 1 = CH4L, (0-5% v/v CH4)
- Range 2 = CH4H, (0-100% v/v CH4)
- Range 3 = C3H8, (0-2% v/v C3H8)

The standard configuration of the carbon dioxide sensor is as follows:

- Range 1 = CO2L, (0-5% v/v)
- Range 2 = None
- Range 3 = CO2P, (0-5000ppm)

The range flag settings can be changed depending upon the Private data settings.

**Note1:** Care must be taken when changing the Range enable flags to ensure that the selected combination gives rise to accurate gas readings. In particular if Range 1, Range 2 and Range 3 are selected then the sensor Range 3 should be verified to be the same gas type as ranges 1 and 2.

**Note2:** Illegal range configurations are:

- 1) Range 1 Enabled - No  
Range 2 Enabled - No  
Range 3 Enabled - No  
Range 4 Enabled - No
- 2) Range 1 Enabled - Yes  
Range 2 Enabled - No  
Range 3 Enabled - Yes  
Range 4 Enabled - Yes / No
- 3) Range 1 Enabled - No  
Range 2 Enabled - Yes  
Range 3 Enabled - Yes  
Range 4 Enabled - Yes / No

## ***HC Single Gas Sensor, Private Data sensor type set to Single***

Range 1 = CH4L  
Range 2 = CH4H  
Range 3 = C3H8  
Range 4 = Not Applicable

### **1) Range 1 -**

Range 1 Enabled - Yes  
Range 2 Enabled - No  
Range 3 Enabled - No  
Range 4 Enabled - No

Notes: The Range 3 equivalent gas reading is also available in the serial liveData2.  
The DAC output is relative to Range 1 FSD.

### **2) Range 2**

Range 1 Enabled - No  
Range 2 Enabled - Yes  
Range 3 Enabled - No  
Range 4 Enabled - No

Notes: The Range 3 equivalent gas reading is also available in the serial liveData2.  
The DAC output is relative to Range 2 FSD.

### **3) Range 3**

Range 1 Enabled - No  
Range 2 Enabled - No  
Range 3 Enabled - Yes  
Range 4 Enabled - No

Notes: The Range 3 gas reading is duplicated in all the serial liveData1 & liveData2 fields for the hydrocarbon sensor.  
The DAC output is relative to Range 3 FSD

### **4) Auto ranging between R1 and R2**

Range 1 Enabled - Yes  
Range 2 Enabled - Yes  
Range 3 Enabled - No  
Range 4 Enabled - No

Notes: The Range 3 equivalent gas reading is also available in the serial liveData2.  
The DAC output is relative to Range 2 FSD.

### **5) Auto ranging between R1 and R2 and R3**

Range 1 Enabled - Yes  
Range 2 Enabled - Yes  
Range 3 Enabled - Yes  
CO2 Enabled - No

Notes: The gas level automatically selects the lowest range to give maximum resolution in the serial data.  
The DAC output is relative to the highest range, i.e. Range 3 FSD.  
The EL, Power and FSD setting reflect the three ranges to be used.

## **Carbon dioxide Single Gas Sensor, Private Data sensor type set to Single**

Range 1 = 0-5% CO2

Range 2 = None

Range 3 = 0-5000ppm CO2

Range 4 = Not Applicable

### **1) Range 1 -**

Range 1 Enabled - Yes

Range 2 Enabled - No

Range 3 Enabled - No

Range 4 Enabled - No

Notes: The Range 3 equivalent gas reading is also available in the serial liveData2.  
The DAC output is relative to Range 1 FSD.

### **2) Range 2**

Range 1 Enabled - No

Range 2 Enabled - Yes

Range 3 Enabled - No

Range 4 Enabled - No

Notes: The Range 3 equivalent gas reading is also available in the serial liveData2.  
The DAC output is relative to Range 2 FSD.

### **3) Range 3**

Range 1 Enabled - No

Range 2 Enabled - No

Range 3 Enabled - Yes

Range 4 Enabled - No

Notes: The DAC output is relative to Range 3 FSD

### **4) Auto ranging between R1 and R2**

Range 1 Enabled - Yes

Range 2 Enabled - Yes

Range 3 Enabled - No

Range 4 Enabled - No

Notes: The Range 3 equivalent gas reading is also available in the serial liveData2.  
The DAC output is relative to Range 2 FSD.

### **5) Auto ranging between R1 and R2 and R3**

Range 1 Enabled - Yes

Range 2 Enabled - Yes

Range 3 Enabled - Yes

CO2 Enabled - No

Notes: The gas level automatically selects the lowest range to give maximum resolution in the serial data.

The DAC output is relative to the highest range, i.e. Range 3 FSD.

The EL, Power and FSD setting reflect the three ranges to be used.



## **Dual Gas Sensor, Private Data sensor type set to Dual**

Range 1 = CH4L, 0 - 5%  
Range 2 = CH4H, 0 - 100%  
Range 3 = C3H8, 0 - 2%  
Range 4 = CO2L, 0 - 5%

### **1) Range 1 -**

Range 1 Enabled - Yes  
Range 2 Enabled - No  
Range 3 Enabled - No  
Range 4 Enabled - Yes

Notes: Gas readings for Range 1 and Range 4 are available in the serial liveData2.  
The Range 3 equivalent gas reading is also available in the serial liveData2.

### **2) Range 2**

Range 1 Enabled - No  
Range 2 Enabled - Yes  
Range 3 Enabled - No  
Range 4 Enabled - Yes

Notes: Gas readings for Range 2 and Range 4 are available in the serial liveData2.  
The Range 3 equivalent gas reading is also available in the serial liveData2.

### **3) Range 3**

Range 1 Enabled - No  
Range 2 Enabled - No  
Range 3 Enabled - Yes  
Range 4 Enabled - Yes

Notes: Gas readings for Range 3 and Range 4 are available in the serial liveData2.

### **4) Auto ranging between R1 and R2**

Range 1 Enabled - Yes  
Range 2 Enabled - Yes  
Range 3 Enabled - No  
Range 4 Enabled - Yes

Notes: Gas readings for Range 1 and Range 2 are available as a combined auto-ranging gas reading in the serial liveData2.  
The Range 3 equivalent gas reading is also available in the serial liveData2.  
The Range 4 gas reading is available in the serial liveData2.

### **5) Auto ranging between R1, R2 and R3**

Range 1 Enabled - Yes  
Range 2 Enabled - Yes  
Range 3 Enabled - Yes  
CO2 Enabled - Yes

Notes: Gas readings for Range 1, Range 2 and Range 3 are available as a combined auto-ranging gas reading in the serial liveData2.  
The Range 3 equivalent gas reading is also available in the serial liveData2.  
The Range 4 gas reading is available in the serial liveData2.

## **DAC monitor**

This setting enables, On or disables, Off the DAC monitoring function. When enabled the actual DAC output is checked to see if it is as expected and produce an error condition if it is not as expected.

### **Cal gas check**

This setting enables or disables the feature whereby the sensor response to gas is checked to see if it is as expected and produce an error result if it is not as expected. This is used in the serial communication command to span the sensor. Its primary function is to stop a calibration when no gas is present.

### **Reading format**

The gas reading can be expressed as either %v/v or as a percentage of the FSD. Thus when set to a percentage of the FSD and the FSD is set to the lower explosive level, LEL, the sensor outputs the gas readings directly in LEL terms.

### **Live data type**

The gas reading can be expressed as either float or integer types. This only affects the serial data. When the setting is set to Integer the 4 byte float result is replaced by two 2 byte integers. The first integer is a multiplier whilst the second integer is the actual gas level.

This is used where users for one reason or another cannot handle IEEE floating point numbers.

The multiplier takes the following format:

Reading	Scale Factor
>5000	1
>2000	2
>1000	8
>100	16
>60	128
>20	256
>10	512
>5	1024
>2	2048
Else	4096

### **DAC power-up percent**

This value is used to output a DAC value during the warm up period. It is usually set below the zero level and is used to indicate that the sensor is not ready. It is expressed as a percentage of the DAC zero setting. The range is 25 to 100.

### **DAC Zero**

This value is used to output a DAC value equivalent to 0% gas.

**Voltage setting:** the limits are 0.4 to 0.5 (Volts absolute).  
**Bridge setting:** the limits are 0.4 to 0.6 (times supply voltage).

### **DAC Fsd**

This value is used to output a DAC value equivalent to 100% FSD gas.

**Voltage setting:** the limits are 1.0 to 2.5 (Volts absolute).  
**Bridge setting:** the limits are -0.2 to + 0.2 (Volts change relative to the zero point)

### **DAC output mode**

This is an indication only value. This value sets the DAC output to either the voltage or bridge output and is configured at the time of manufacture.

### **% Maximum Output**

The computed gas reading may result in a level that is above the selected range. This reading will not be accurate but may give an indication of the actual gas level. The setting can be programmed to clamp the reading to a maximum reading as follows:

## Sensor range FSD = 2

100	readings above 2 will be clamped to 2
125	readings above 2 will be clamped to 2.5
150	readings above 2 will be clamped to 3
200	readings above 2 will be clamped to 4

## Sensor range FSD = 5

100	readings above 5 will be clamped to 5
125	readings above 5 will be clamped to 6.25
150	readings above 5 will be clamped to 7.5
200	readings above 5 will be clamped to 10

## Sensor range FSD = 100

100	readings above 100 will be clamped to 100
125	readings above 100 will be clamped to 125
150	readings above 100 will be clamped to 150
200	readings above 100 will be clamped to 200

## **Calibration Emulation**

The platinum sensor uses a new method to calibrate the sensor due to its multi-range features. The sensor can be configured to emulate old designs, i.e. single gas / single range sensors. Thus the sensor can be made to provide legacy support when this setting is 'On'.

## **Cross reference ranges 1 & 3**

The hydrocarbon platinum sensor is usually calibrated for methane, CH<sub>4</sub> (range 1) and Propane, C<sub>3</sub>H<sub>8</sub> (range 3). A vast number of hydrocarbon gases are detected by the platinum sensor but vary in their response to the type of gas. Some of these gases have similar responses to CH<sub>4</sub> while others have a similar response to C<sub>3</sub>H<sub>8</sub>.

In these cases a cross reference factor can be applied that will allow the gas to be displayed more accurately. The limits are 0.5 to 5.0

## Range Data Fields

This is a separate tab in the configuration window, one for each range. It can only be viewed, click on the relevant tab, i.e. Range 1

The screenshot shows the 'Platinum IR Sensor - V3.4.3 [EN 50271]' configuration window. The 'Range 1' tab is selected, displaying various configuration fields for that range. The fields and their values are:

Field	Value
Fsd	5.000
linearity EI	-0.328000
linearity power	0.769000
Calibration gas	5.000
Span offset	0.066558
Span cal temperature degC	30.0
Positive Zero suppression ...	0
Negative Zero suppressio...	0
Rounding	0.025

Below the main configuration area, there is a 'Detector 1 Calibration' section with buttons for 'Zero', 'Span Range 1', 'Span Range 2', and 'Span Range 3'. The values for these buttons are 5.000, 100.000, and 2.100 respectively. An 'Update Sensor' button is located at the bottom right of this section.

The status bar at the bottom of the window shows 'Ready', '38400, Crc, com3', and '07.17.00EU'.

### **FSD**

Indicating the maximum reading for the selected range. It can only be viewed.

### **Linearty EI**

Indicating the constant used to convert the non-linear output from the sensor to a linear range. It can only be viewed.

### **Linearty Power**

Indicating the power constant used to convert the non-linear output from the sensor to a linear range. It can only be viewed.

### **Calibration Gas**

Indicating the gas level used to calibrate the sensor. It can only be viewed.

### **Span Offset**

Indicating the deviation from the temperature compensated span factor. It can only be viewed.

### **Span Cal temperature**

Indicating the temperature of the sensor when a gas calibration was performed. It can only be viewed.

### **Positive Zero Suppression %**

The amount of gas, expressed as a percent of the FSD, required to give a non-zero reading. Limits 0-5.

### **Negative Zero Suppression %**

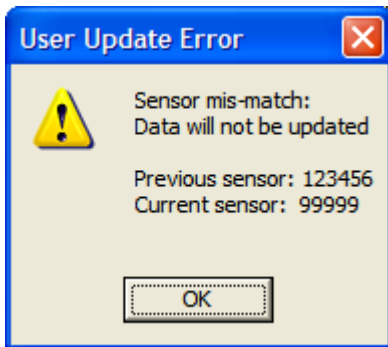
The amount negative drift in the sensor zero, expressed as a percent of the FSD, to give a negative reading. Limits 0-5.

### **Rounding**

The sensor sensitivity, expressed in absolute terms. Limits 0-1.

### **Note:**

The PC application will detect any sensor swapping. For e.g. if a sensor's private data is read followed by the firmware version and the configuration data and the sensor is swapped before using the write configuration data operation, the PC application will detect the sensor swap and will produce an error message as shown in the figure below.

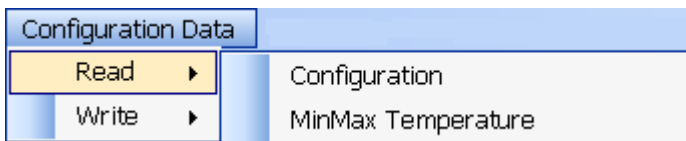


## **Min / Max Temperature**

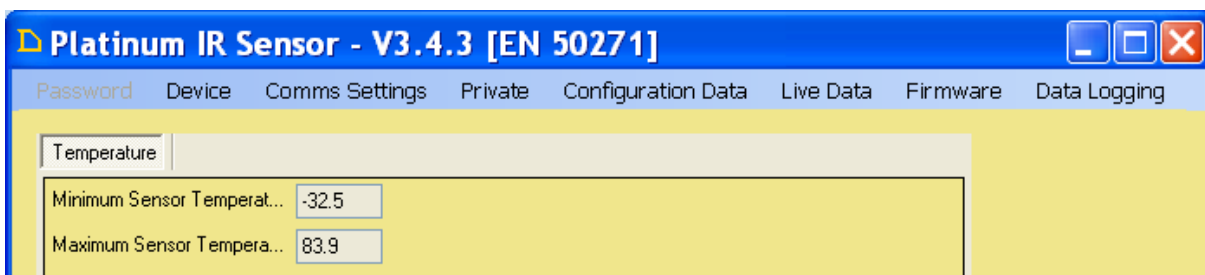
The sensor logs the temperature conditions it is exposed to, these are stored in non-volatile memory and can be accessed as follows:

The temperature data can be accessed as follows:

Select Configuration Data, Read, MinMax Temperature i.e.



## **Temperature window**



## Data Fields

### Minimum Sensor Temperature

The minimum temperature that the sensor has been exposed, it can only be viewed.

### Maximum Sensor Temperature

The maximum temperature that the sensor has been exposed, it can only be viewed.

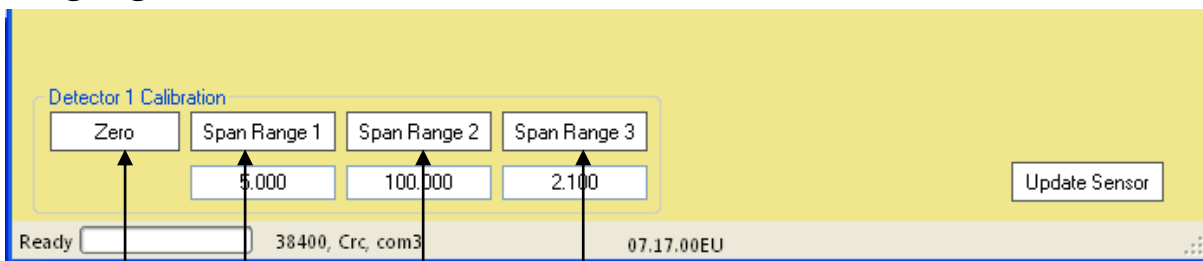
## Calibration

The sensor can be calibrated by applying the correct gas and pressing the appropriate button.

Note 1: The appropriate gas level must be entered into the box immediately below the button.

Note 2: The hydrocarbon sensor should be purged with gas for at least 2 minutes, while the CO2 sensor should be gassed for at least 5 minutes prior to performing a zero or span operation.

### Single gas sensor ( Detector 1, hydrocarbon or carbon dioxide)



#### Zero sensor

Apply zero gas at a rate of 500 CC/Min, wait for reading to stabilise then press the Zero button.

#### Span range 1

Apply a suitable gas level (*refer to TDS0097 for details of ideal test gas*) wait for the reading to stabilise then press the *Span range 1* button.

#### Span range 2

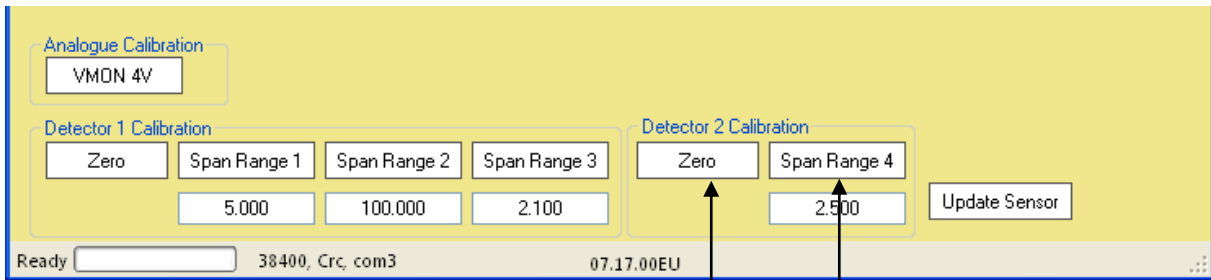
Apply a suitable gas level (*refer to TDS0097 for details of ideal test gas*) wait for the reading to stabilise then press the *Span range 2* button.

#### Span range 3

Apply a suitable gas level (*refer to TDS0097 for details of ideal test gas*) wait for 2 minutes then press the *Span range 3* button.

## Dual Gas Sensor ( Detector 1 usually hydrocarbon, Detector 2, usually CO2 )

Calibrate the sensor as above. In addition calibrate the detector 2 channel.



### Zero

Apply zero gas at a rate of 500 CC/Min, wait for 5 minutes then press the Zero button. Note that the Zero button can be pressed during the previous zero calibration

### Span

Apply a suitable gas level (refer to TDS0097 for details of ideal test gas) wait for 5 minutes then press the Span Range 4 button.

## Analogue output

The analogue output can be tested by the following buttons:



### Dac Zero

Press the *Dac Zero* button to force the analogue output to the zero gas level. This level is maintained until the Restore button is pressed or power is removed from the sensor.

### Dac FSD

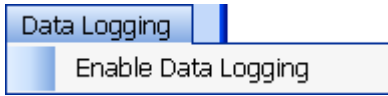
Press the *Dac FSD* button to force the analogue output to the FSD gas level. This level is maintained until the Restore button is pressed or power is removed from the sensor.

### Dac Restore

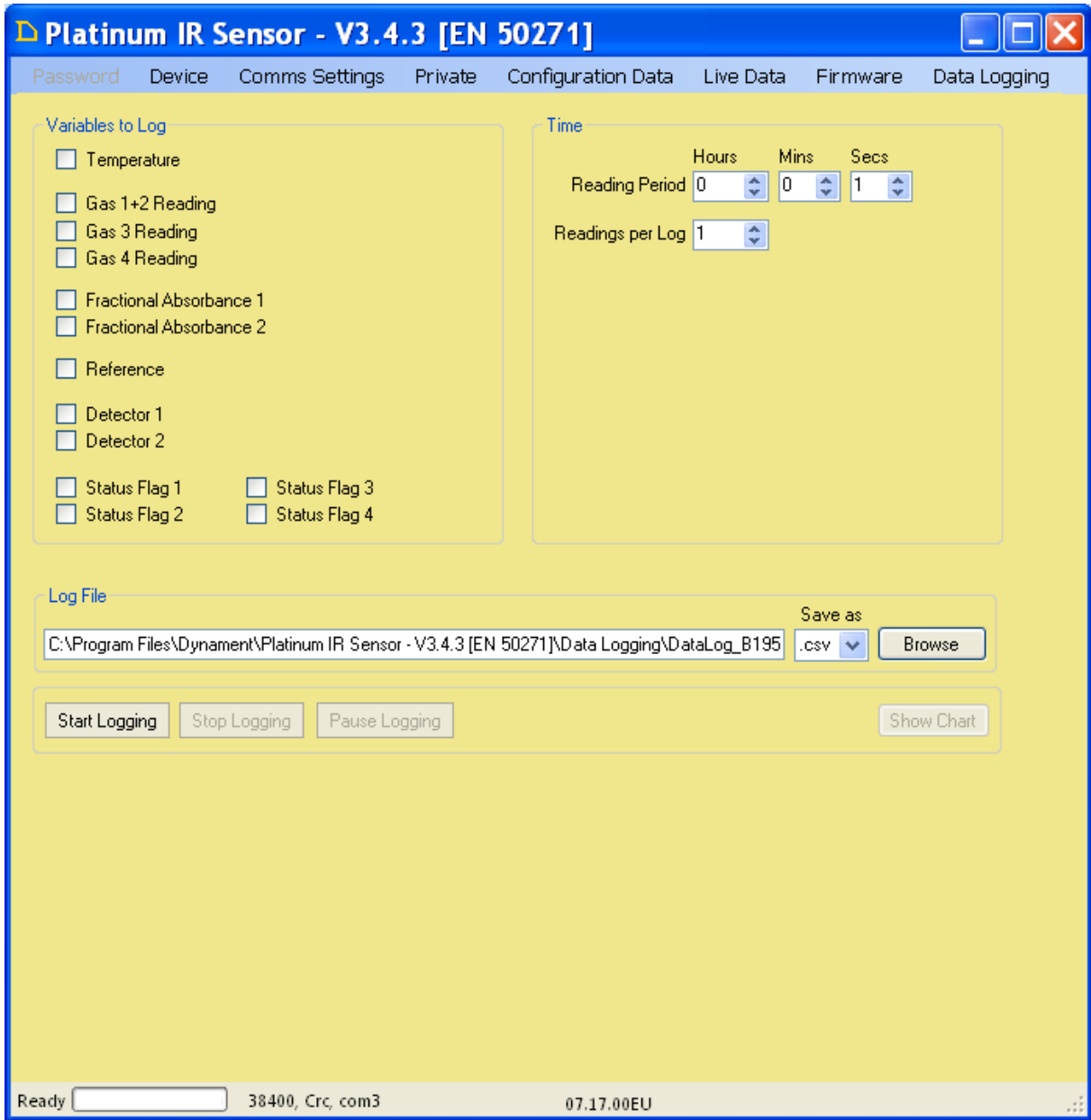
Press the *Dac Restore* button to return the analogue output to normal operation.

# Data Logging

The Application can log results from the sensor to determine if it is working to specification. To start data logging select *Data Logging | Enable Data Logging* as follows:



The following screen is shown:



Enter a file name, the application will prompt with a file name that is based on the sensor batch number and the current date. Select the file extension as either a .csv or .txt file.

Use the Browse button to locate an existing file. If an existing file is selected then it will be over-written and all data will be lost.



Set the log interval to the desired frequency by the *Readings per log* option.

Time

Hours Mins Secs

Reading Period 0 0 1

Readings per Log 1

The *Readings per log* option will store an average of the readings if set to greater than 1.

Next select the *Variables to Log* that are required, i.e.

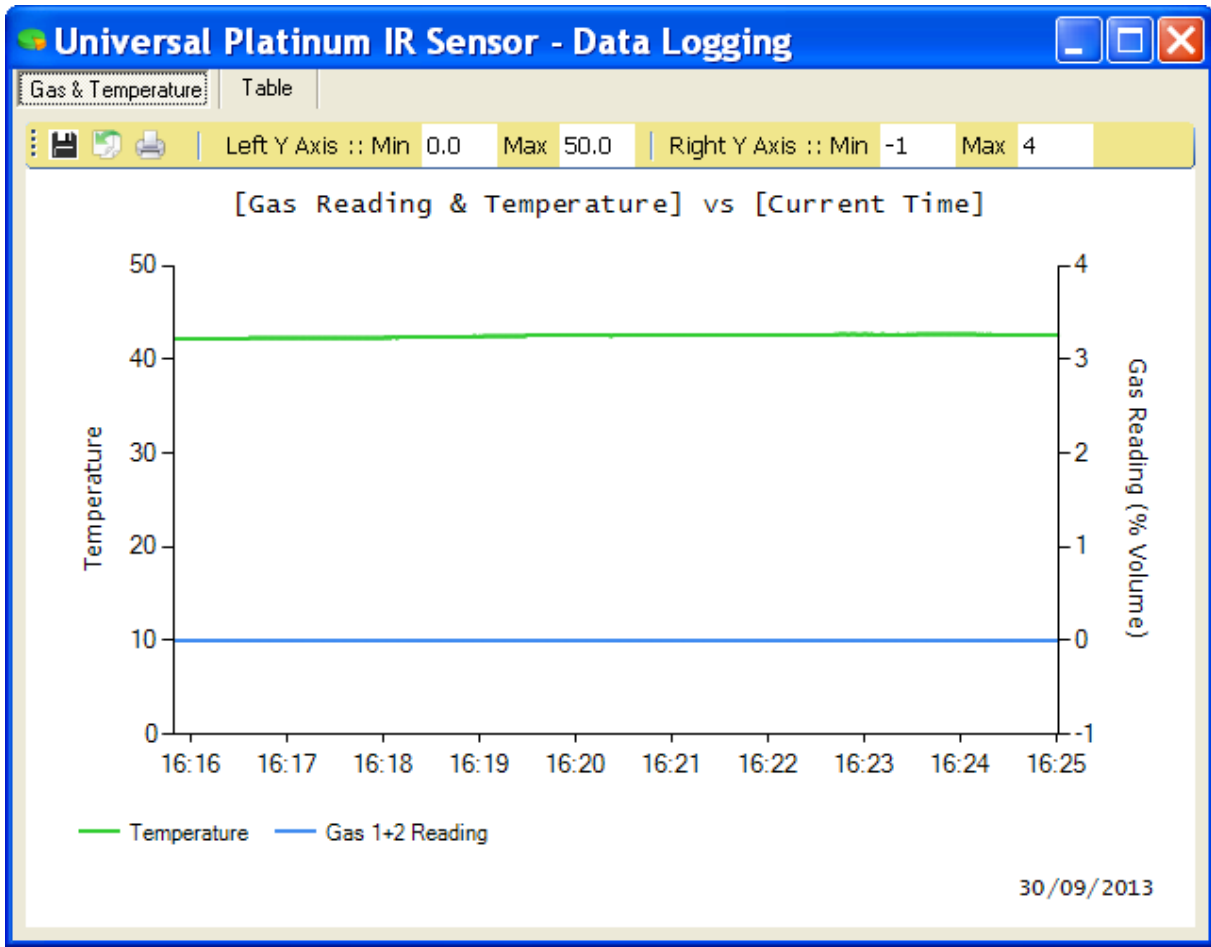
Variables to Log

- Temperature
- Gas 1+2 Reading
- Gas 3 Reading
- Gas 4 Reading
- Fractional Absorbance 1
- Fractional Absorbance 2
- Reference
- Detector 1
- Detector 2
- Status Flag 1
- Status Flag 2
- Status Flag 3
- Status Flag 4

Start the data logging as follows:

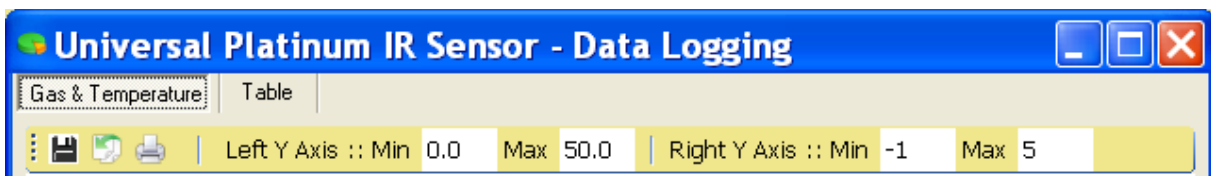
Start Logging Stop Logging Pause Logging Show Chart

The data logging graph screen will be displayed:



The Data logging screen can be moved or closed in the usual Windows® fashion.

The Axis can be changed by clicking on the Min / Max settings at the top of the window, i.e.



Click on the box and edit the setting

Note: changing the setting may make the graph data disappear!

Stop the data logging clicking on the *Stop Logging* button, pause the data logging clicking on the *Pause Logging* button.



The Log file, CSV type, is a tabbed delimited file that can be viewed by word processors or imported to Excel® etc. for viewing or manipulation.

Date	Time	Temp deg C	Det1 Reading	Det1 Counts
19/12/2012	14:24:13	38.0	0.00	2534
19/12/2012	14:24:14	38.0	0.00	2534
19/12/2012	14:24:15	38.0	0.00	2534
19/12/2012	14:24:16	38.0	0.00	2533
19/12/2012	14:24:17	38.0	0.00	2533
19/12/2012	14:24:18	38.0	0.00	2533
19/12/2012	14:24:19	38.0	0.00	2533
19/12/2012	14:24:20	38.0	0.00	2533
19/12/2012	14:24:21	38.0	0.00	2533
19/12/2012	14:24:22	38.0	0.00	2533
19/12/2012	14:24:23	38.0	0.00	2533
19/12/2012	14:24:24	38.0	0.00	2533
19/12/2012	14:24:25	38.0	0.00	2533
19/12/2012	14:24:26	38.0	0.00	2533
19/12/2012	14:24:27	38.0	0.00	2533
19/12/2012	14:24:28	38.0	0.00	2533
19/12/2012	14:24:29	38.0	0.00	2533

The data can be manipulated in Excel®, example as follows:

