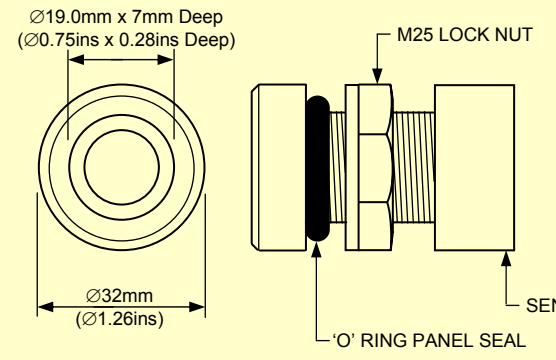


ACCESSORIES FOR USE WITH THE DYNAMENT RANGE OF INFRARED GAS SENSORS

SENSOR MOUNTING (Part No. OEM-1-MTG)



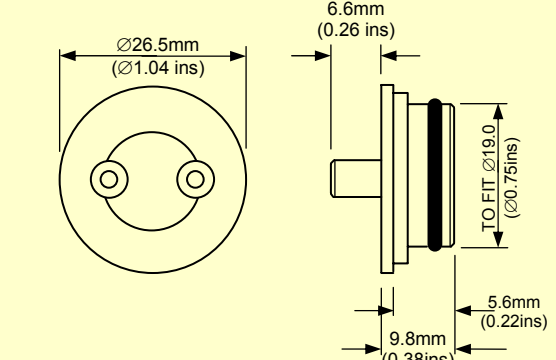
$\varnothing 19.0\text{mm} \times 7\text{mm}$ Deep
 ($\varnothing 0.75\text{ins} \times 0.28\text{ins}$ Deep)

$\varnothing 32\text{mm}$
 ($\varnothing 1.26\text{ins}$)

M25 LOCK NUT
 'O' RING PANEL SEAL
 SENSOR RETAINING NUT

- ◆ Provides a rapid means of mounting sensor into equipment.
- ◆ Maximum panel thickness 4.5mm (0.18ins).
- ◆ Manufactured from grey PVC.
- ◆ Fitted with internal foam gasket seal.

GAS SAMPLING ADAPTOR (Part No. OEM-1-ADTR)



$\varnothing 26.5\text{mm}$
 ($\varnothing 1.04\text{ins}$)

6.6mm
 (0.26 ins)

TO FIT $\varnothing 19.0$
 ($\varnothing 0.75\text{ins}$)

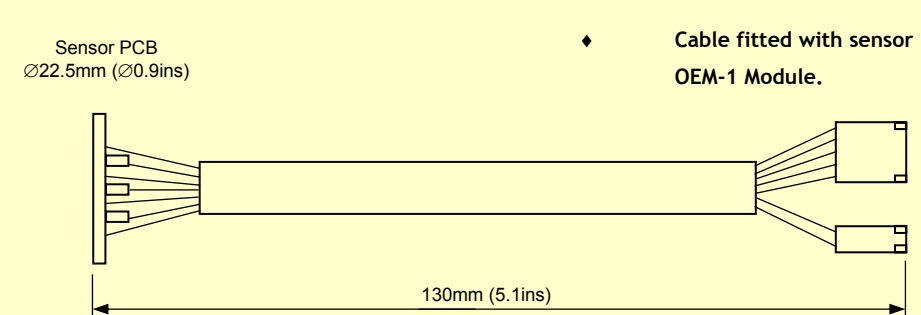
5.6mm
 (0.22ins)

9.8mm
 (0.38ins)

Blanking Cap

- ◆ Sampling Adaptor for use with above sensor mounting.
- ◆ Accepts flexible, push fit tubing.
- ◆ Supplied with two blanking caps for zero gas calibrations.

SENSOR CABLE & CONNECTOR (Part No. OEM-1-CABLE)

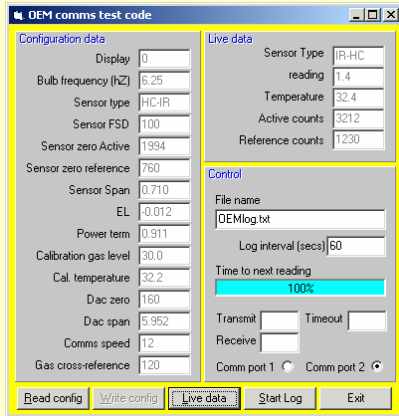


Sensor PCB
 $\varnothing 22.5\text{mm}$ ($\varnothing 0.9\text{ins}$)

130mm (5.1ins)

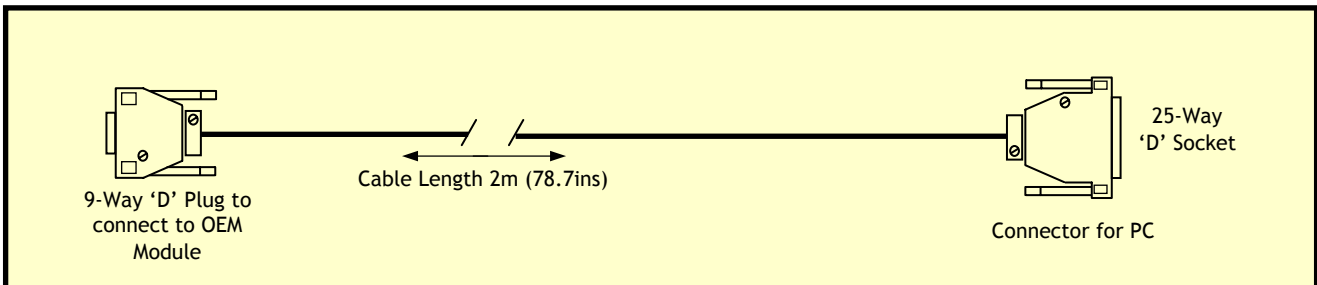
- ◆ Cable fitted with sensor PCB & connectors for use with OEM-1 Module.

DYNAMENT OEM COMMUNICATIONS SOFTWARE (Part No. OEM-1-SOFTWARE)

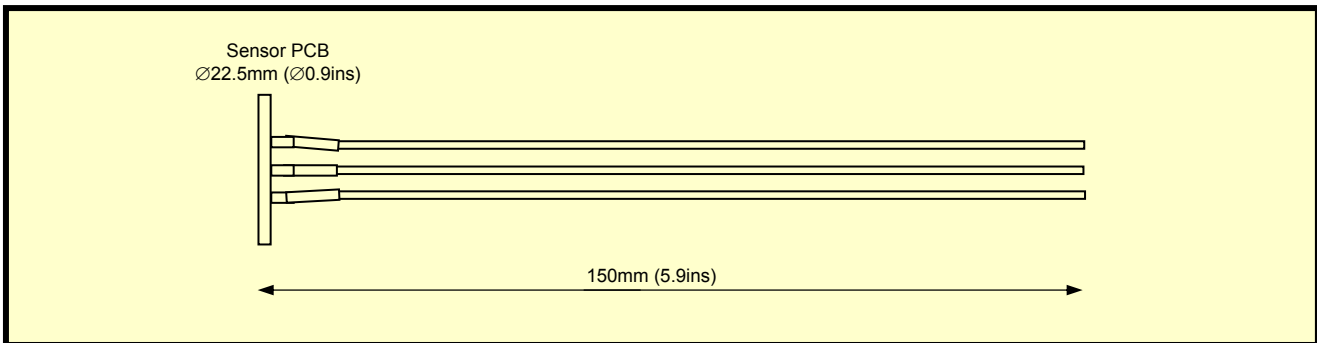


- ◆ Software development tool to gather and process data via the RS232 port of the OEM Module.
- ◆ Allows the user to modify the operation of the module
- ◆ Enables reprogramming of the module via a PC
- ◆ Provides a tabular display of sensor parameters
- ◆ Data logging facility to record sensor outputs automatically during test procedures
- ◆ Allows the application of temperature compensation factors

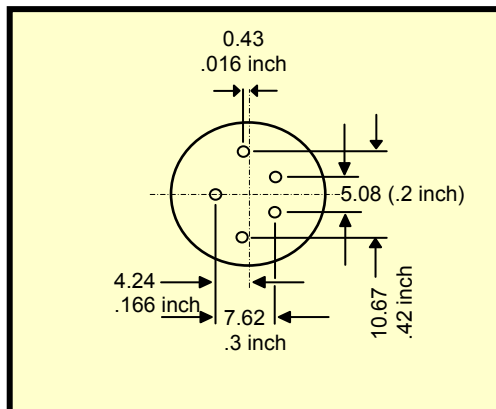
RS232 CONNECTION LEAD (Part No. OEM-1-LEAD)



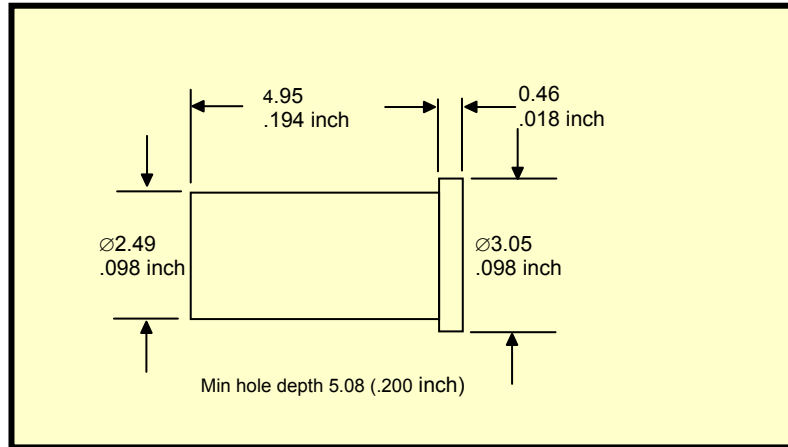
PREMIER SENSOR CIRCUIT BOARD WITH LEADS (Part No. P/PCB)



PREMIER SENSOR CIRCUIT BOARD WITHOUT LEADS (Part No. P/PCB/NL)



PCB SOCKET FOR ALL SENSOR TYPES (Part No SENSOR SOCKET)



ORDERING INFORMATION

ITEM	DYNAMENT PART NUMBER
SENSOR MOUNTING	OEM – 1- MTG
GAS SAMPLING ADAPTOR	OEM – 1- ADTR
SENSOR CABLE AND CONNECTOR	OEM – 1-CABLE (130mm, 5.1”)
DYNAMENT OEM COMMUNICATIONS SOFTWARE	OEM – 1 - SOFTWARE
RS232 CONNECTION LEAD	OEM – 1 - LEAD
PREMIER SENSOR CIRCUIT BOARD WITH LEADS	P/PCB
PREMIER SENSOR CIRCUIT BOARD WITHOUT LEADS	P/PCB/NL
PCB SOCKET FOR ALL SENSOR TYPES	SENSOR SOCKET
1 MICRON SELF-ADHESIVE FILTER FOR ALL SENSOR TYPES	FILTER (PTFE)



Dynament Limited

Premier House · The Village · South Normanton · Derbyshire · DE55 2DS · UK.
 Tel: 44 (0)1773 864580 · Fax: 44 (0)1773 864599
 email: sales@dynament.com · www.dynament.com